

Connectable indoor units

Wall-Mounted Style



Deluxe Model		MSZ-FH06NA	MSZ-FH09NA	MSZ-FH12NA	MSZ-FH15NA	MSZ-FH18NA
Airflow (Q, L, M, H, SH)	CFM Dry	137-167-221-304-381	137-167-221-304-381	137-167-221-304-398	225-262-304-355-411	225-262-304-355-437
Sound Indoor (Q, L, M, H, SH)	Cooling dB(A)	20-23-29-36-40	20-23-29-36-40	21-24-29-36-41	27-31-35-39-44	27-31-35-39-47
Min. Ampacity	Indoor A	1				
Dimension	H in.	12-11/16	12-11/16	12-11/16	12-11/16	12-11/16
	W in.	36-7/16	36-7/16	36-7/16	36-7/16	36-7/16
	D in.	9-3/16	9-3/16	9-3/16	9-3/16	9-3/16
Pipe Size	Liq. X Gas in.	1/4 x 3/8	1/4 x 3/8	1/4 x 3/8	1/4 x 1/2	1/4 x 1/2

Model		MSZ-GL06NA*	MSZ-GL09NA	MSZ-GL12NA
Airflow (Q, L, M, H, SH)	CFM Dry	145-170-237-321-399	145-170-237-321-399	145-170-237-321-399
Sound Indoor (Q, L, M, H, SH)	Cooling dB(A)	19-22-30-37-43	19-22-30-37-43	19-22-30-37-45
Min. Ampacity	Indoor A	1		
Dimension	H in.	11-5/8	11-5/8	11-5/8
	W in.	31-7/16	31-7/16	31-7/16
	D in.	9-1/8	9-1/8	9-1/8
Pipe Size	Liq. X Gas in.	1/4 x 3/8	1/4 x 3/8	1/4 x 3/8



Model		MSZ-GL15NA	MSZ-GL18NA	MSZ-GL24NA
Airflow (Q, L, M, H, SH)	CFM Dry	205-272-335-420-533	258-332-417-522-646	388-469-544-628-738
Sound Indoor (Q, L, M, H, SH)	Cooling dB(A)	26-32-38-44-49	28-33-38-44-49	34-41-45-49-53
Min. Ampacity	Indoor A	1		
Dimension	H in.	11-5/8	12	12-13/16
	W in.	31-7/16	36-5/16	43-5/16
	D in.	9-1/8	9-13/16	9-3/8
Pipe Size	Liq. X Gas in.	1/4 x 1/2	1/4 x 1/2	3/8 x 5/8

Floor-Mounted Style

Model		MFZ-KJ09NA	MFZ-KJ12NA	MFZ-KJ15NA	MFZ-KJ18NA
Airflow (Q, L, M, H, SH)	CFM Dry	138-173-208-251-275	138-173-208-251-275	198-237-282-328-374	198-237-282-328-374
Sound Indoor (Q, L, M, H, SH)	Cooling dB(A)	21-25-30-34-38	21-25-30-34-38	28-31-36-40-43	28-31-36-40-43
Min. Ampacity	Indoor A	1			
Dimension	H in.	23-5/8	23-5/8	23-5/8	23-5/8
	W in.	29-17/32	29-17/32	29-17/32	29-17/32
	D in.	8-15/32	8-15/32	8-15/32	8-15/32
Pipe Size	Liq. X Gas in.	1/4 x 3/8	1/4 x 3/8	1/4 x 1/2	1/4 x 1/2



Connectable indoor units

1-Way Cassette Style

Model			MLZ-KP09NA	MLZ-KP12NA	MLZ-KP18NA
Airflow (Q, L, M, H, SH)	CFM Dry		212-254-282-311	212-258-297-332	212-293-346-403
Sound Indoor (Q, L, M, H, SH)	Cooling	dB(A)	27-31-34-38	27-32-36-40	29-36-41-47
Min. Ampacity	Indoor	A	1		
Dimension	H	in.	7-5/16	7-5/16	7-5/16
	W	in.	43-3/8	43-3/8	43-3/8
	D	in.	14-3/16	14-3/16	14-3/16
Pipe Size	Liq. X Gas	in.	1/4 x 3/8	1/4 x 3/8	1/4 x 1/2



4-Way Cassette Style

Model			SLZ-KF09NA	SLZ-KF12NA	SLZ-KF15NA
Airflow (L,M, H)	CFM Dry		230-265-300	230-280-335	245-315-405
Sound Indoor (L, M, H)	Cooling	dB(A)	25-28-31	25-30-34	27-34-39
Min. Ampacity	Indoor	A	.25	.3	.4
Dimension	H	in.	8-3/16	8-3/16	8-3/16
	W	in.	22-7/16	22-7/16	22-7/16
	D	in.	22-7/16	22-7/16	22-7/16
Pipe Size	Liq. X Gas	in.	1/4 x 3/8	1/4 x 3/8	1/4 x 1/2



Multi-Position Air Handler

Low Static Pressure (0.8" WG) Model			SVZ-KP12NA	SVZ-KP18NA	SVZ-KP24NA
Airflow (L,M, H)	CFM Dry		278-381-448	471-573-675	515-625-735
Sound Indoor (L, M, H)	Cooling	dB(A)	29-36-39	33-36-41	
Min. Ampacity	Indoor	A	3		
Dimension	H	in.	39-13/16	39-13/16	39-13/16
	W	in.	17	17	17
	D	in.	21-5/8	21-5/8	21-5/8
Pipe Size	Liq. X Gas	in.	1/4 x 3/8	1/4 x 1/2	3/8 x 5/8
External Static Pressure		in. WG	0.3 - 0.5 - 0.8		

Low Static Pressure (0.8" WG) Model			SVZ-KP30NA	SVZ-KP36NA
Airflow (L,M, H)	CFM Dry		613-744-875	767-910-910
Sound Indoor (L, M, H)	Cooling	dB(A)	32-37-41	35-40-42
Min. Ampacity	Indoor	A	4.13	
Dimension	H	in.	43-3/4	43-3/4
	W	in.	21	21
	D	in.	21-5/8	21-5/8
Pipe Size	Liq. X Gas	in.	3/8 x 5/8	
External Static Pressure		in. WG	0.3 - 0.5 - 0.8	



Connectable indoor units

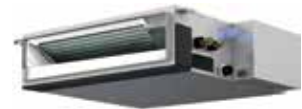
Ceiling-Concealed Style

Low Static Pressure (0.2" WG) Model			SEZ-KD09NA4	SEZ-KD12NA4	SEZ-KD15NA4	SEZ-KD18NA4
Airflow (L,M, H)	CFM Dry		194-247-317	247-317-388	353-441-529	423-529-635
Sound Indoor (L, M, H)	Cooling	dB(A)	23-26-30	23-28-33	30-34-37	30-34-38
Min. Ampacity	Indoor	A	1			
Dimension	H	in.	7-7/8	7-7/8	7-7/8	7-7/8
	W	in.	31-1/8	39	39	46-7/8
	D	in.	27-9/16	27-9/16	27-9/16	27-9/16
Pipe Size	Liq. X Gas	in.	1/4 x 3/8	1/4 x 3/8	1/4 x 1/2	1/4 x 1/2
External Static Pressure	in. WG		0.02-0.06-0.14-0.20			



Ceiling-Concealed Style

Med. Static Pressure (0.6" WG) Model			PEAD-A09AA7	PEAD-A12AA7	PEAD-A15AA7	PEAD-A18AA7	PEAD-A24AA7
Airflow (L,M,H)	CFM Dry		282-318-353	353-424-494	424-512-600		512-635-741
Sound (indoor L,M,H)	Cooling	dB(A)	24-26-28	28-30-34	30-33-37		
Min. Ampacity	Indoor	A	1.45		1.69		2.63
Dimension	H	in.	9-7/8 35-7/16 28-7/8				
	W	in.					
	D	in.					
Pipe Size	Liq. X Gas	in.	1/4 x 3/8		1/4 x 1/2		3/8 x 5/8
External Static Pressure	WG	in.	0.14-0.20-0.28-0.40-0.60				



Med. Static Pressure (0.6" WG) Model			PEAD-A30AA7	PEAD-A36AA7
Airflow (L,M,H)	CFM Dry		618-742-883	847-1,024-1,201
Sound (indoor L,M,H)	Cooling	dB(A)	30-34-39	33-38-42
Min. Ampacity	Indoor	A	2.73	
Dimension	H	in.	9-7/8	
	W	in.	43-5/16	
	D	in.	28-7/8	
Pipe Size	Liq. X Gas	in.	3/8 x 5/8	
External Static Pressure	WG	in.	0.14 - 0.20 - 0.28 - 0.40 - 0.60	

Q=Quiet, L=Low, M=Med, H=Hi, SH=SuperHi
All features may not apply to all models. Ask your dealer for details.

Controllers

Mitsubishi Electric offers a wide variety of options when it comes to controlling your comfort. Whatever your need, we have the solution to effortlessly adjust your Zoned Comfort Solutions®.



ENHANCED WIRELESS REMOTE CONTROLLER

- MODE: AUTO, COOL, DRY, HEAT and FAN
- FAN: Adjusts fan speed
- STOP/START: 24-hour ON/OFF timer
- VANE: Sets horizontal vane position
- TIME: Power off timer and clock adjustment
- SCHEDULING: 7 days, 4 events per day
- Included with M-Series FH, KJ & MLZ systems.



STANDARD WIRELESS REMOTE CONTROLLER

- MODE: AUTO, COOL, DRY and HEAT
- FAN: Low, Med & High speeds
- STOP/START: 24-hour ON/OFF timer
- VANE: Sets horizontal vane position
- SETTING: Current time
- TEMP: Units (F° or C°)
- WIDE BUTTON: Selects air direction
- TIME: Power off timer and clock adjustment
- Included with M-Series GL, FE, D & MS-A systems.

ADDITIONAL WIRELESS CONTROLLER FEATURES AVAILABLE ON CERTAIN MODELS

- "Powerful Mode" function permits the system to temporarily run at a lower/ higher temperature with an increased fan speed, which quickly brings the room to the optimum comfort level (on select models)
- Wide Vane setting provides a wider horizontal air distribution on select models with wider cabinets
- Features vary by indoor model



MHK1 Wireless Remote Controller Kit

With the MHK1 Wireless Remote Controller Kit, comfort control has never been easier. It installs anywhere with a simple wall-mounted design, and its large, back-lit screen makes it very easy to read. Operation modes include cool, drying, auto, heat, and fan.

MHK1 Wireless Remote Controller Kit includes a Wireless Wall-mounted Remote Controller and a Wireless Receiver located with the indoor wall or ceiling-mounted unit. You may choose to enhance your control convenience and flexibility with an optional Portable Central Controller and/or Outside Air Sensor.

Portable Central Controller

When paired with the MHK1 Wall-Mounted Controller, the Portable Central Controller (MCCH1) can monitor and control on/off mode and set your desired temperature. It also has scheduled override capability and displays outside air temperature and humidity when paired with the outside air sensor.



Outside Air Sensor

The Outside Air Sensor (MOS1) monitors outdoor air temperature and humidity and conveniently displays that information on the Portable Central Controller and the wall-mounted controller.

